



## INSTALLATION AND MAINTENANCE INSTRUCTIONS

### RIFOlift – Steam Pump Type S / SS

#### **General**

1. The installation procedure is a critical stage in a life of a pump and care should be taken to avoid damage to the pump or equipment.
2. The Adcamat automatic pump can lift hot condensate, oils and other liquids as high as 60 m or discharge against an equivalent total back pressure. The pump starts when there is something to pump and stops when there isn't.
3. Liquid flows by gravity into the pump through an inlet check valve lifting a float which, at the upper limit of it's travel, opens the supply valve which allows steam or compressed air to enter the pump body. Pressure in the pump builds up until just sufficient to overcome back pressure. The pressurized liquid opens the outlet check valve and discharge commences. When the float reaches the minimum lower level it closes the steam or compressed air supply valve and opens the vent allowing the liquid to fill the pump again.

#### **Warning!**

- Do not touch the equipment without appropriate protection during working operation because it may conduct heat if the used fluid is at high temperature.
- Before starting maintenance be sure that the equipment is not pressurized or hot.
- The equipments must be used within the working temperature and pressure limits laid down for them, otherwise they may fail (refer to nameplate and/or - Data Sheet).
- Do not remove the nameplate attached to the equipment. Serial number and other useful information is stamped on it.

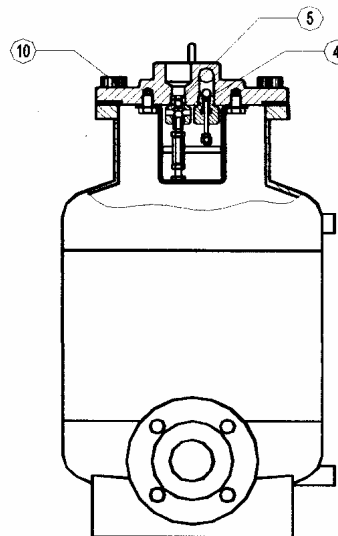
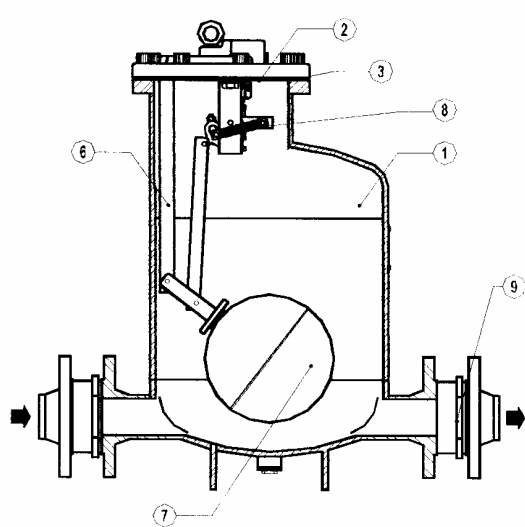
#### **INSTALLATION**

1. Before to install remove plastic covers placed on flanges or connection ends. The equipment has an arrow or Inlet/Outlet designations. Be sure that it will be installed on the appropriate direction.
2. The pump must be handled carefully in order to avoid any mechanism damage. The pump must be installed at the lower level of the equipment to be drained and the exhaust DN 1" connection pointing upwards. For correct installation and operating of the pump, Y strainer, isolating valves and steam trap must be provided. Please refer to Data Sheet.

#### **MAINTENANCE**

We recommend that the pressure operated pumps are serviced as necessary, at least every 12 months.

**LOSS OF GUARANTEE: Total or partial disregard of above instructions involves loss of any right to guarantee.**



## PARTS LIST:

Designation	Valve Size	Pos. No.	Qty.
Inlet/Outlet valves	DN1" - 3"	4/5	1 set
Float and gasket	DN1" - 3"	3/7	1 set
Spring set	DN1" - 3"	8	1 set
Cover gasket	DN1" - 3"	3	1

## Recommended tightening torques:

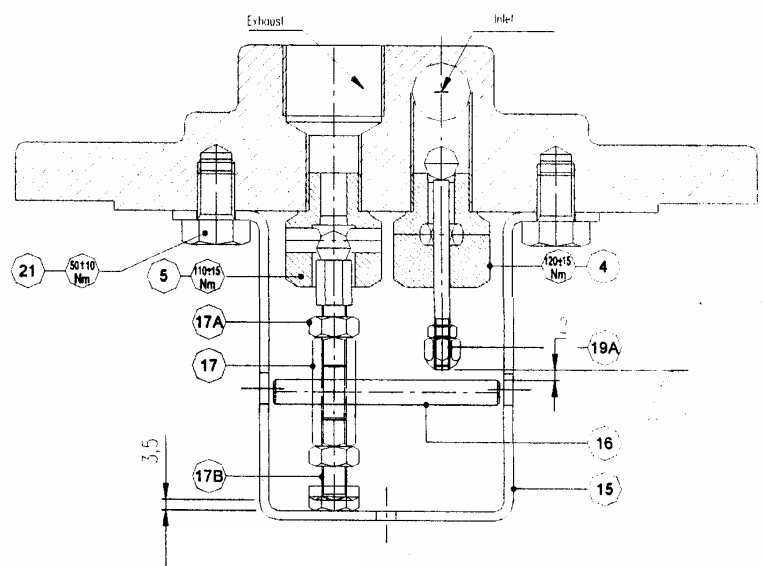
Pos.No.	Pump Size	Nm
No. 10	DN1" - 3"	85-95
No. 4	DN1" - 3"	120
No. 5	DN1" - 3"	110

## How to replace Inlet/Outlet valves:

With the float on the lowest position remove the bolts No. 21 and disassembly the support No. 15.

The valves set are supplied duly calibrated from factory. Do not unscrew the nuts No. 17A and 19A.

After to replace the valves and support, make sure that the mechanism is working making some cycles manually.



## Adjustment of upper level switch :

Tighten up screw nr.18A - decrease maximum Level  
Untighten the screw nr.18A - increase maximum level

## Adjustment of lower level switch :

Tighten up screw nr.18C - increase lower level  
Untighten the screw nr.18C - decrease lower level

**IMPORTANT :** The screws must not be adjusted Without specific factory information

