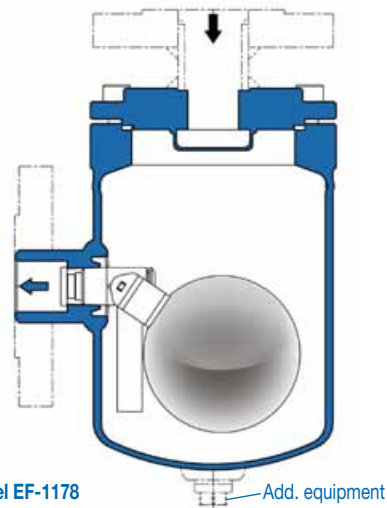


Model WO-1177



Model EF-1178

Housing-Material: 1.4571

Sizes: DN15, DN20, DN25

Connections:

- Flange DN 15-25 acc. DIN EN 1092-1
- Flange 1/2"-1" to ANSI B 16.5, Class 150 & 300
- Female thread G 1/2"-G1" (BSP), acc. DIN ISO 228-1
- Female thread 1/2", 3/4" NPT acc. ANSI B 1.20.1
- Other connections on request

Nominal pressure stage: PN 25

Housing volume: 1,2 liter

Housing operation-limits:

| | | | |
|----------------------------------|-----|-----|-----|
| Max. operating pressure in bar g | 25 | 23 | 20 |
| Max. operating temperature in °C | 100 | 200 | 350 |

Weight: Depends on connections 3,5 - 5,0 kg

Media: Air, gases, vapors, aggressive media.

Function: Increasing level opens and decreasing level closes the outlet without delay, independent of pressure and temperature fluctuations.

Special characteristics: Only one movable point since the rotary-slidevalve is both swivel joint and shut-off device.

Additional equipment against extra price:

- Connection for pressure compensating line
- Internal vent jet (steam only)
- Submerged gas-tight float control for hazardous media (up to 100°C)
- Gaskets 1.4571 at temperatur higher 150 °C
- Connection for a limit switch as option for electronic control
- Drain plug for discharge the trap

Installation:

Horizontal model (WO-1177): lateral inlet and outlet.
Angular model (EF-1178): inlet at the top, lateral outlet.

Function-limit:

| Float control cross section | max. line pressure in bar g |
|-----------------------------|-----------------------------|
| IIs | 18 |
| IIs-GD* | 12 |

* GD: gastight under-level float control for cold media

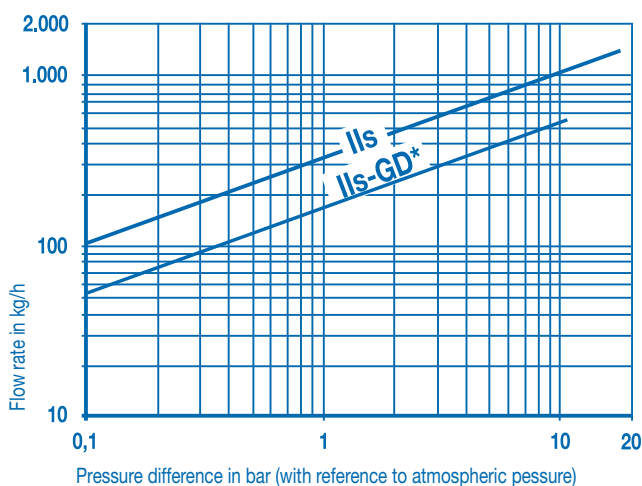
CE - Mark:

The pressure equipment is in accordance with the Pressure Vessel Directiv 97/23/EC, Article 3, subsection 3 and beers no CE mark.

Please state the following when making inquiries/placing orders:

Medium, density, initial pressure, counter-pressure, temperature, quantity of condensation (kg/h).

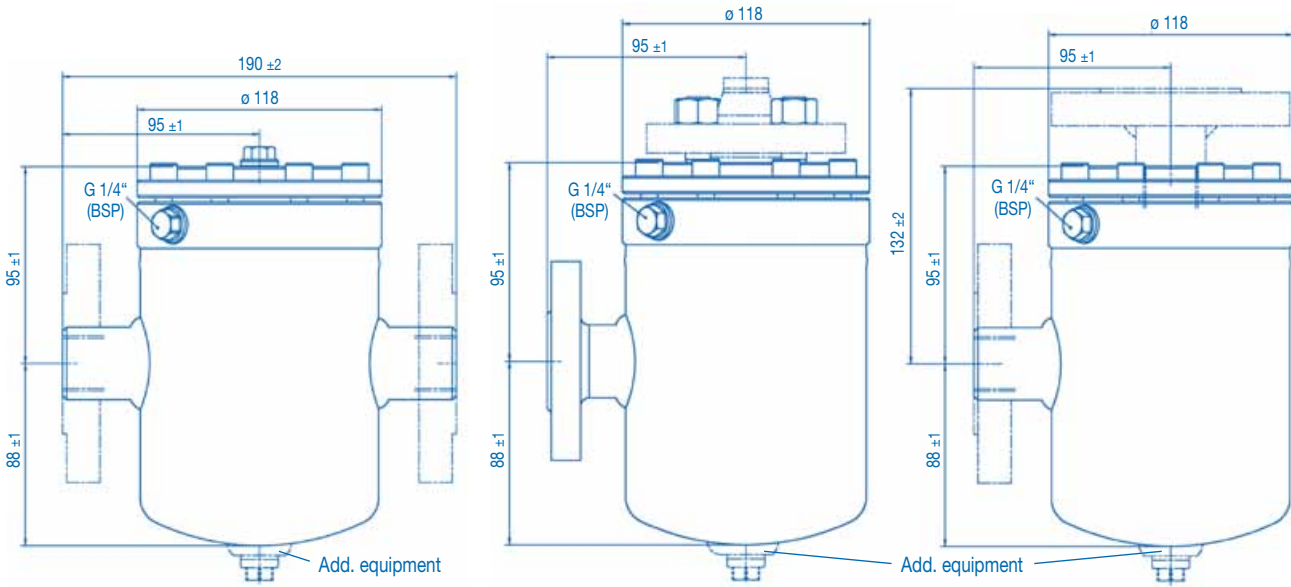
Performance



Pressure difference in bar (with reference to atmospheric pessus)

For very low pressures:

| Pressure difference in bar g | Flow rate in kg/h |
|------------------------------|-------------------|
| 0,02 | 23 |
| 0,04 | 32 |
| 0,06 | 40 |
| 0,08 | 46 |

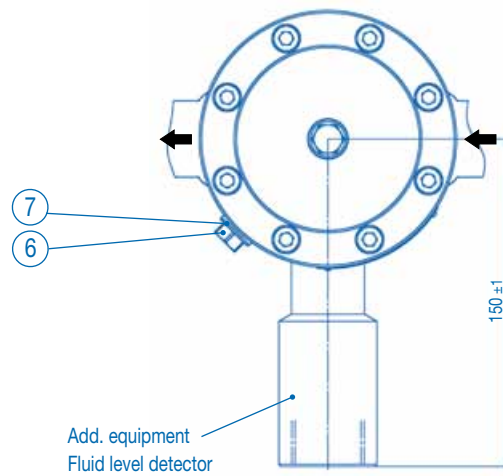
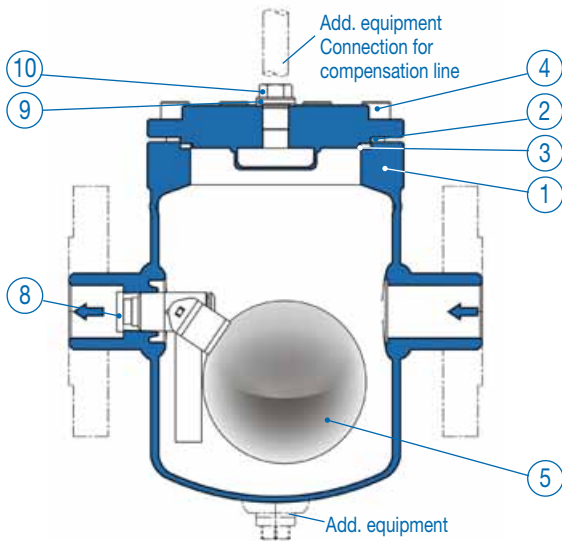


Model WO-1177 (DN15-25)

Model EF-1178 (DN15)

Model EF-1178 (DN20/25)

Spare Parts



- 1 **Housing base complete:** 1.4571
- 2 **Housing cover:** 1.4571
- 3 **Housing-Gasket:** PTFE* or 1.4571
- 4 **Housing screws:** ISO 4762 - A4-70 - M8
- 5 **Float control unit**:** 1.4571
- 6 **Control screw:** 1.4571 - G 1/4" (BSP)
- 7 **Gasket:** PTFE* or 1.4571
- 8 **Retaining screw:** 1.4571
- 9 **Locking screw:** 1.4571 - G 1/4" (BSP)
- 10 **Gasket:** PTFE* or 1.4571

To ensure correct parts delivery, specify part number, Works Standard Sheet number 1177/1178, DN and for control components the cross-section.

* PTFE only at temperatures up to 150°C!

** Due to tightness requirements individual parts cannot be supplied.