

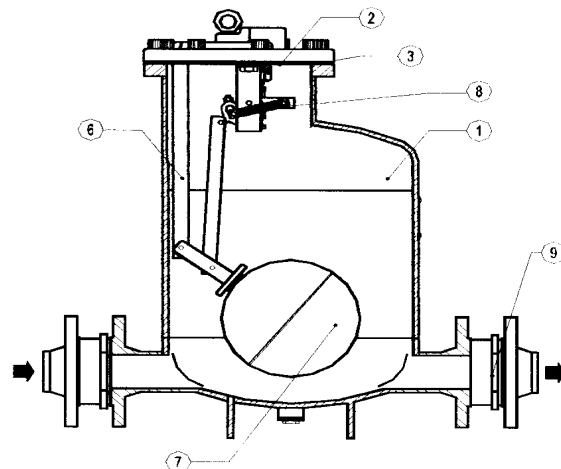
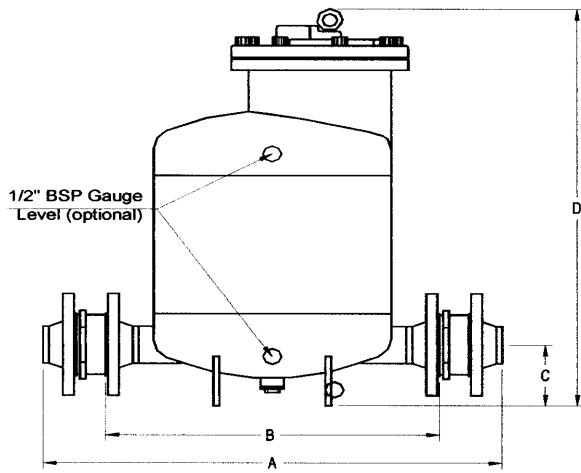
RIFOlift-S Carbon-Steel C 22.8, Check-Valves made from Bronze or C 22.8
RIFOlift-SS made from stainless steel 1.4571/1.4581

Description:

The RIFOlift is recommended in the transfer of high-temperature liquids such as condensate, oils and other liquids to a higher elevation or pressure. The pump starts when there is something to pump and stops when there isn't. Under certain conditions, it can drain a closed vessel under vacuum or pressure. The pump can be operated by steam, compressed air or gas and can be used for lifting any kind of noncorrosive liquids. Connections are female

Application limits:

max. allowable pressure	25 bar	min. density	0,80 kg/dm ³
max. allowable temperature	205°C	max. viscosity	5° Engler
max. operating pressure	0,5 to 8,6 bar at 200°C		



Designation:

- | | |
|-----------------|-----------------------|
| 1 Body | 6 Internal Mechanisms |
| 2 Cover | 7 Float |
| 3 Gasket | 8 Spring Assy |
| 4 Inlet Valve | 9 Check Valves |
| 5 Exhaust Valve | 10 Bolts |

Function:

Liquid flows by gravity into the pump through an inlet check valve lifting afloat which, at the upper limit of its travel, opens the supply valve which allows steam or compressed air to enter the pump body. Pressure in the pump builds up until just sufficient to overcome back pressure. The pressurized liquid opens the outlet check valve and discharge commences. When the float reaches the minimum lower level it closes the steam or compressed air supply valve and opens the vent, allowing the liquid to fill the pump again. As the amount of liquid discharged at each stroke is known, the total volume passed during a given period can be calculated by counting the number of strokes during that period. For this purpose a special counter is available which screws into a tapped connection on the top cover of the pump. This counter records the number of pumping strokes thus enabling the pump to function as a reliable flow meter.

Dimensions:	A	B	C	D	Diameter	Kg
1" / DN 25	740	520	100	640	240	71
1 1/2" / DN 40	795	535	100	640	240	72,80
2" / DN 50	860	550	100	640	240	74,50
3" x 2" / DN 80/50	935	580	100	640	240	78,5

Options:

Level-Gauge Counter

RIFOlift- KS Packaged automatic Pump made from C 22.8

Description:

The RIFOlift is recommended in the transfer of high-temperature liquids such as condensate, oils and other liquids to a higher elevation or pressure. The pump starts when there is something to pump and stops when there isn't. Under certain conditions, it can drain a closed vessel under vacuum or pressure. The pump can be operated by steam, compressed air or gas and can be used for lifting any kind of noncorrosive liquids. Connections are female screwed.

Function:

Liquid flows by gravity into the pump through an inlet check valve lifting afloat which, at the upper limit of its travel, opens the supply valve which allows steam or compressed air to enter the pump body. Pressure in the pump builds up until just sufficient to overcome back pressure. The pressurized liquid opens the outlet check valve and discharge commences. When the float reaches the minimum lower level it closes the steam or compressed air supply valve and opens the vent, allowing the liquid to fill the pump again. As the amount of liquid discharged at each stroke is known, the total volume passed during a given period can be calculated by counting the number of strokes during that period. For this purpose a special counter is available which screws into a tapped connection on the top cover of the pump. This counter records the number of pumping strokes thus enabling the pump to function as a reliable flow meter.



The discharge capacity of the pump is a function of:

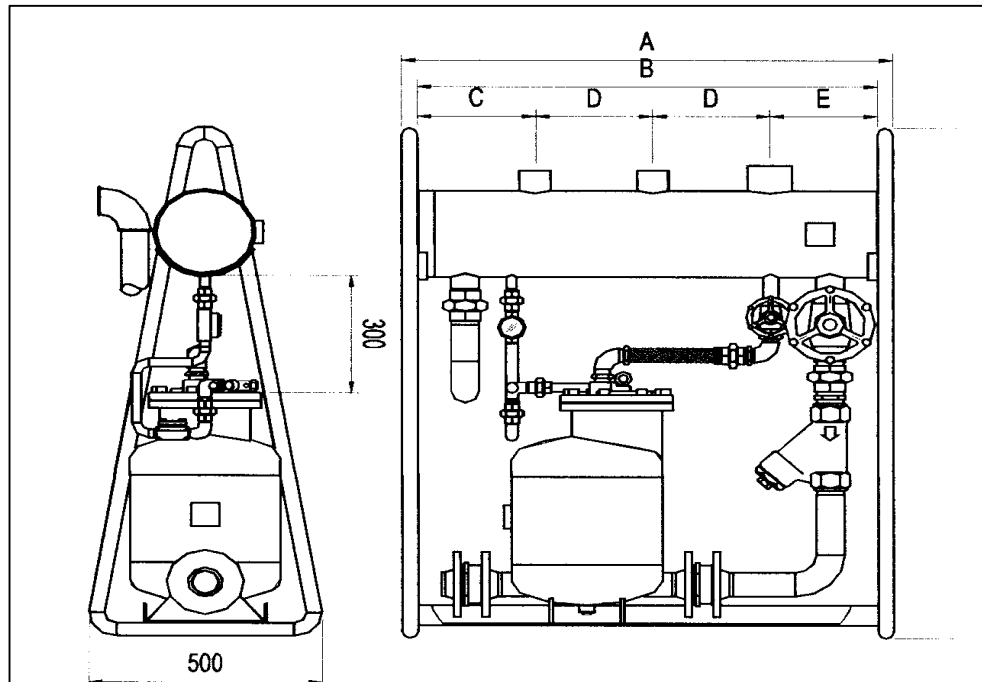
1. Condensate load in kg/h
2. The pressure of operating medium (steam, compressed air or gas)
3. The total lift or back pressure the pump will have to exhaust against. This includes the change in fluid level elevation after the pump, plus pressure in the return piping, plus the pressure drop caused by friction, plus any other system component pressure drop the pump exhaust will have to overcome.

Operating pressure	Total lift or back pressure	Dimension DN / Capacity Kg/h			
		1"	1 1/2"	2"	3" x 2"
bar	bar				
0,34	0,14	725	1225	1725	2810
0,69	0,34	815	1315	1860	3170
0,69	0,14	905	1495	2315	3945
1,70	1,00	905	1495	2315	3945
1,70	0,69	950	1770	2540	4550
1,70	0,34	1040	1905	2765	4715
3,40	2,80	905	1450	2175	3720
3,40	1,70	1040	1680	2630	4440
3,40	0,69	1090	1815	2905	4900
5,20	4,10	905	1540	2270	3855
5,20	2,80	1090	1725	2630	4440
5,20	1,00	1135	1905	2995	5080
6,90	4,10	1000	1630	2630	4490
6,90	2,80	1090	1905	2765	4715
6,90	1,00	1180	2085	2995	5080
8,60	4,10	1040	1765	2720	4625
8,60	2,80	1090	2040	2860	4805
8,60	1,00	1180	2130	3040	5130

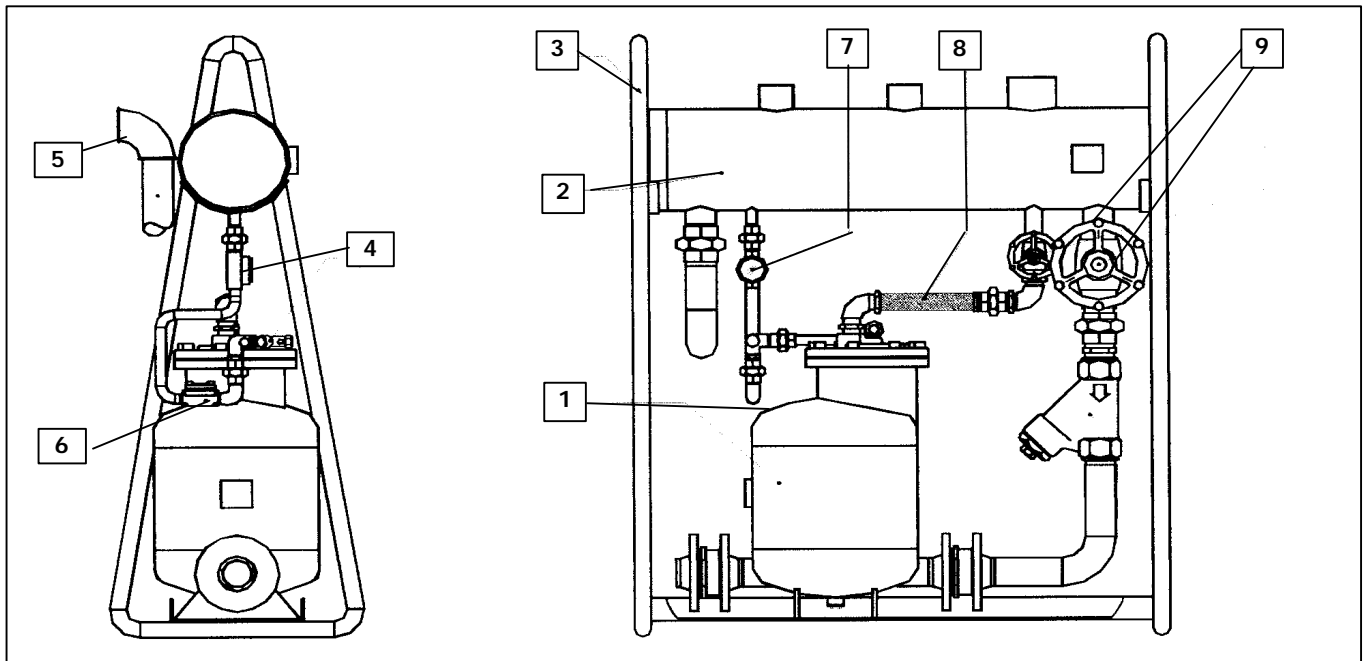
Capacity multiplying factors for other filling heads

m	1"	1 1/2"	2"	3" x 2"
0,15	0,7	0,7	0,7	0,9
0,3	1	1	1	1
0,6	1,2	1,2	1,2	1,08
0,9	1,35	1,35	1,35	1,2

Dimensions:



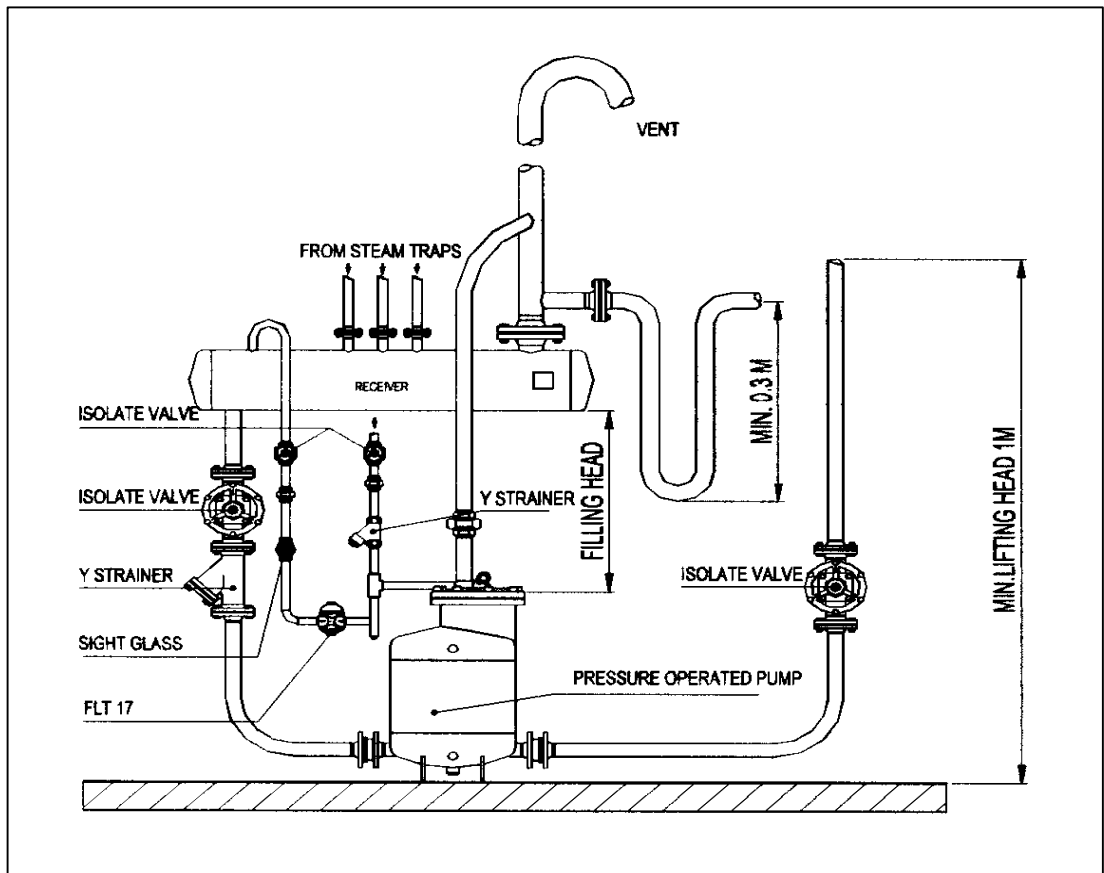
Size DN	A	B	C	D	E	Height
25	900	830	200	250	250	1300
40	1050	980	250	250	230	1300
50	1050	980	250	250	230	1300
80	1050	980	250	250	230	1300



- | | |
|-----------------|-----------------|
| 1 Pump | 6 Steam Trap |
| 2 Receiver | 7 Level Gauges |
| 3 Metal Frame | 8 Flexible hose |
| 4 Dirt Strainer | 9 Ball Valves |
| 5 Overflow | |

Installation 2:

Condensate recovery - open system: The pump removes high temperatures condensate without cavitation problems.



Installation 3:

Drainage of a single unit under vacuum (max. 0,2 bar abs.) Head H1 must range between 1 and 2 m. The lift H must be the minimum possible but never less than 1m (otherwise an siphon is required as H2). Use steam as operating medium (max. pressure 2 - 3 bar)

